

100% Money Back
Guarantee

Vendor:Microsoft

Exam Code:70-246

Exam Name:Private Cloud Monitoring and Operations
with System Center

Version:Demo

QUESTION 1

You need to recommend a solution to implement the planned changes for the research department. What should you include in the recommendation?

- A. Two VMM library shares
- B. One host profile
- C. Two application profiles
- D. One virtual machine template

Correct Answer: D

QUESTION 2

You need to implement the alert notifications. The solution must meet the technical requirements. A Lync Server administrator enables an account named ADATUM\IMUser for Unified Communications. What should you do next?

- A. Configure ADATUM\IMUser as a Run As Account. Install the Lync Management Pack. Create a notification subscriber and an IM channel.
- B. Create a mailbox for the ADATUM\IMUser account. Install the Exchange Server Management Pack. Create a notification subscriber and an SMTP channel.
- C. Create a mailbox for the ADATUM\IMUser account. Install Microsoft Visual C++ 2008 Runtime. Create a notification subscriber and an SMTP channel.
- D. Configure ADATUM\IMUser as a Run As Account. Install Unified Communications Managed API 3.0 Runtime. Create a notification subscriber and an IM channel.

Correct Answer: D

QUESTION 3

You need to prepare the infrastructure to meet the software update requirement.

Which three actions should you perform in sequence? To answer, move the appropriate actions from the list of actions to the answer area and arrange them in the correct order.

Select and Place:

Actions	Answer Area
Create an automatic deployment rule on NWT-SCCM01.	<p>www.Pass4Lead.com</p>
Add the software update point site system role to NWT-WSUS01.	
Install the WSUS administration console on NWT-SCCM01.	
Install Configuration Manager on NWT-WSUS01.	
Add the software update point site system role to NWT-SCCM01.	
Create an automatic deployment rule on NWT-WSUS01.	

Correct Answer:

Actions	Answer Area
	<p>www.Pass4Lead.com</p>
Add the software update point site system role to NWT-WSUS01.	
Install Configuration Manager on NWT-WSUS01.	
Create an automatic deployment rule on NWT-WSUS01.	

QUESTION 4

You need to ensure that the self-service users and the administrators can deploy virtual machines. The solution must meet the technical requirements.

What should you create?

- A. Two VMM library shares
- B. One host profile
- C. Two application profiles
- D. One virtual machine template

Correct Answer: D

QUESTION 5

You need to recommend which System Center 2012 component must be added to the System Center infrastructure to meet the technical requirement for the Configuration Manager service.

The solution must minimize administrative effort.

Which component should you recommend?

- A. App Controller
- B. Microsoft System Center Advisor (SCA)
- C. Service Manager
- D. Orchestrator

Correct Answer: C

QUESTION 6

You discover that many incidents are generated for VM2.

You need to resolve all of the incidents from Service Manager in one operation.

What should you create? (More than one answer choice may achieve the goal. Select the BEST answer.)

- A. A configuration item
- B. An incident event workflow
- C. A dependent activity
- D. A problem

Correct Answer: D

QUESTION 7

Your company has a private cloud that is managed by using a System Center 2012 infrastructure.

A server named Server1 hosts the System Center 2012 Service Manager management server.

A server named Server2 hosts the System Center 2012 Orchestrator management server.

You plan to use a runbook named Runbook1 to update the status of Service Manager incidents.

You need to ensure that you can create Runbook1, and then reference the runbook in Service Manager.

What should you do? (Each correct answer presents part of the solution. Choose all that apply.)

- A. From the Service Manager Console, add an incident event workflow.
- B. From the Service Manager Shell, run the Update-SCSMWorkflow cmdlet.
- C. From the Service Manager Console, create an Orchestrator connector.
- D. From the Orchestrator Deployment Manager, register the Integration Pack for System Center Service Manager.
- E. From the Service Manager Console, update the Problem Status list.
- F. From the System Center 2012 Orchestrator Runbook designer, create a connection.

Correct Answer: BCD

Just a draft:

Install the integration pack for SCSM on Orchstrator and configure the connection settings (SCSM server name, User, Password) Create a new runbook First activity -> "Monitor Object" of SCSM integration pack -> Incident Class -> On

Update -> Filter "Support Group" not equal "Tier 1" Add 6 "Send Email" activities -> 6 different recipients -> add the text in each mail body Link all 6 "Send Email" activities with the first "Monitor Object" activity On each link delete the default

rule "On success" Add a new criteria -> Choose the "Support Group" from the data bus -> criteria of the first link "Support Group" equals "Tier 2"

Do the same with the other Links and Support Groups.

Check in and start the runbook

Reference:

<http://social.technet.microsoft.com/Forums/en/administration/thread/ea41a3a4-0b40-47ee-9ecc-a2ecab8794bf>

QUESTION 8

You need to implement a notification solution to meet the technical requirements. What should you create from Operations Manager? (More than one answer choice may achieve the goal. Select the BEST answer.)

- A. Two channels and one subscriber

- B. One channel and one Subscriber
- C. One channel and two subscribers
- D. Two channels and two subscribers

Correct Answer: B

QUESTION 9

You have a System Center 2012 R2 infrastructure that has Orchestrator and Service Manager installed.

Integration between Orchestrator and Service Manager is configured.

You need to ensure that when a change request is made in Service Manager, the following requirements are met:

The ticket number is logged to a file.

The file contains the ticket numbers for every change request.

Each time a ticket number is logged to the file, an email message is sent to an administrator. Which activities should you use in a runbook?

A.

Monitor Object, Insert Line, and Send Email

B.

Get Activity, Append Line, and Send Email

C.

Monitor State, Insert Line, and Send Email

D.

Monitor Object, Append Line, and Send Email

Correct Answer: D

<http://technet.microsoft.com/en-us/library/hh549275.aspx> You do not know when the action should take place. So you need the monitor to trigger your action (not the other way around). The get activity is used when a runbook is already running. <http://technet.microsoft.com/en-us/library/hh206072.aspx> Above states to use the Append Line command for logging purposes (which is not described as such for the Insert Line command). "Use the Append Line activity to append lines to a log file to create audits trails of runbooks."

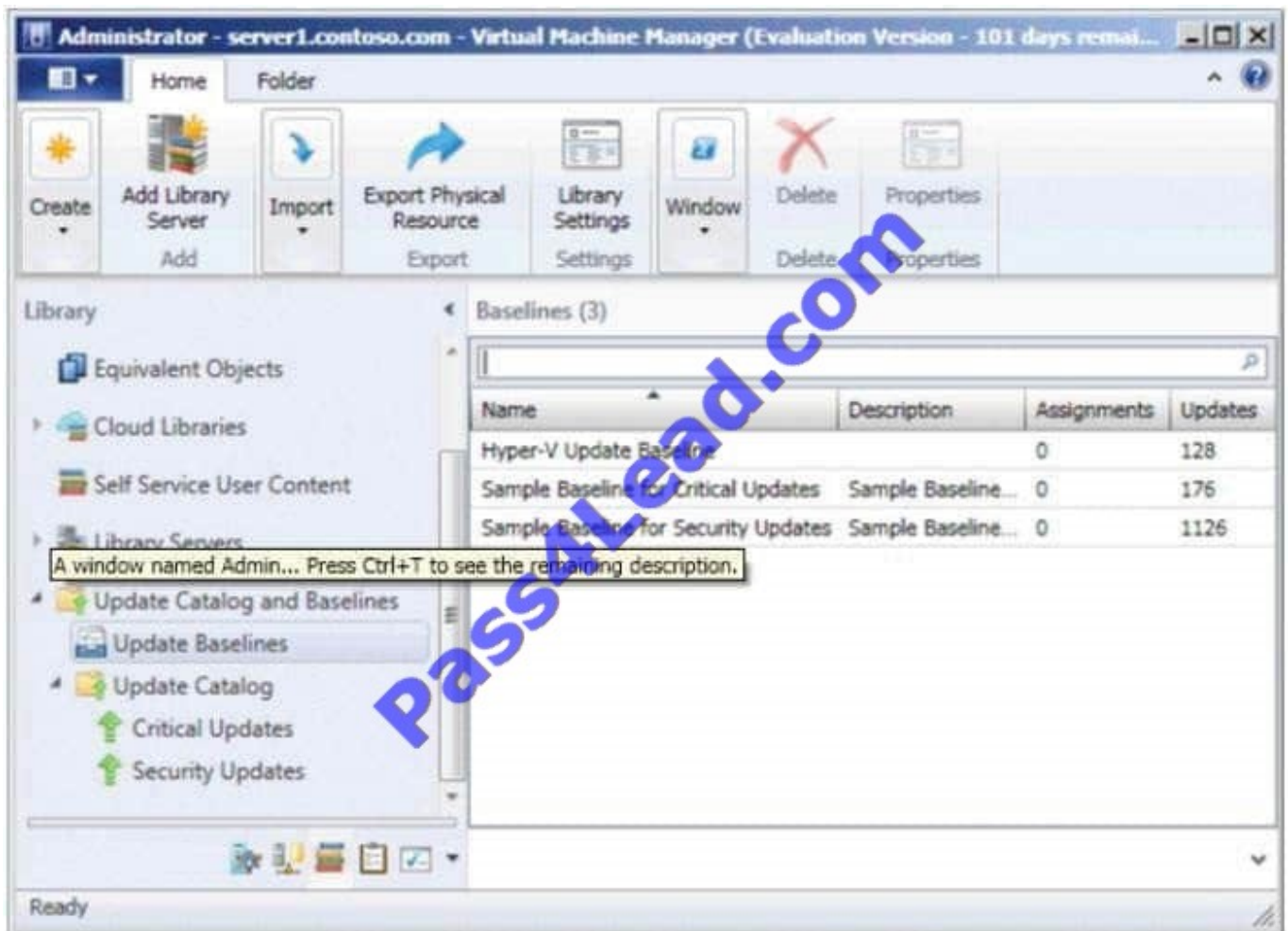
QUESTION 10

Your company has a datacenter in Los Angeles that contains a private cloud. The private cloud is managed by using a System Center 2012 Virtual Machine Manager (VMM) infrastructure.

You create a host group named HG1. You move several Hyper-V hosts to HG1.

You plan to manage Windows updates for the hosts in HG1 by using VMM.

An administrator creates a baseline as shown in the exhibit. (Click the Exhibit button.)



You discover that the updates defined in the baseline are not applied to the hosts in HG1.

You need to ensure that the required updates are deployed to the hosts in HG1.

What should you do?

- A. Copy the required updates to the VMM library server.
- B. Modify the properties of HG1.
- C. Copy the Virtual Machine template to an alternate location.
- D. Modify the properties of the baseline.
- E. Synchronize the Windows Server Update Services (WSUS) server.

Correct Answer: D

QUESTION 11

Your company has a private cloud that is managed by using a System Center 2012 Operations Manager infrastructure.

The network contains several routers and switches.

You open the Network Devices view and discover that a switch is in a critical state.

You need to identify the availability of the switch during the past seven days. The solution must also ensure that you can review which servers are connected to the switch.

What should you use?

- A. The Network Node Dashboard
- B. A diagram view
- C. The Network Vicinity Dashboard
- D. A state view

Correct Answer: A

<http://www.techrepublic.com/blog/networking/using-the-network-dashboard-views-in-scom-2012/5226> Network Node Dashboard View A node is any device connected to a network. Switches and routers are among the most common kinds of nodes you will discover. The node dashboard provides details on the health of a particular device. The upper portion of the node dashboard consists of the network vicinity view for

that node, as well as "speedometer" gauges for node availability today, yesterday, in the last week, and in the last month.

(Periods of time that were not monitored are counted as "available" in the availability statistics, so newly discovered devices will not appear to have had outages in the gauges.) The lower portion of the node dashboard includes a list of all interfaces on the node that are being monitored.

From this view, you can manually override the automatic selections of which interfaces are monitored by SCOM. Also, by right-clicking on specific interfaces, you can pivot to performance or reporting views that drill down into the near term or long term history of an interface. In Figure B, the Interface Packet Analysis report for "PORT 4 on "switch1 during the previous week appears in a second window.

Health of Interfaces on this Node

Interface State	Interface Name	Sent (Bits/sec)	Received (Bits/sec)
✓	PORT-18	21017.5	100144.2
✓	PORT-23	3907.8	278.8
✓	PORT-3	64109.2	117118.8
✓	PORT-14	3696.9	55.8
✓	PORT-16	117710.6	87715.1
✓	PORT-4	1380914.1	954528.8
✓	PORT-17	46863.7	579074.8
○	PORT-12	-	-
○	PORT-10	-	-
○	PORT-24	-	-
○	PORT-13	-	-
○	PORT-7	-	-
○	PORT-21	-	-
○	PORT-6	-	-
○	PORT-22	-	-
○	IF-99	-	-
○	PORT-11	-	-

Interface Packet Analysis - Operations Manager - Report -

File Edit View Help

Run [Icons] 1 of 1

Report Duration: From 12/15/2011 to 12/22/2011
 Histogram: No
 Expressed in: Packets/sec

PORT-switch1

Entity Properties
 Health Explorer
 Navigation
 Report Tasks
 Refresh

Agent C
 Alert Log
 Alerts
 Availabil
 Configur
 Data Vol
 Data Vol
 Event Ar
 Health
 Interface Error Packet Analysis
 Interface Packet Analysis
 Interface Traffic Volume

QUESTION 12

You need to recommend a solution to remediate the Exchange Server 2010 service failures. The solution must meet the technical requirements. What should you include in the recommendation?

- A. Create a service request workflow that triggers a dependent activity.
- B. Create an incident event workflow that triggers a dependent activity.
- C. Create an incident event workflow that triggers a runbook activity.
- D. Create a service request workflow that triggers a runbook activity.

Correct Answer: C

To Read the [Whole Q&As](#), please purchase the [Complete Version](#) from [Our website](#).

Try our product !

100% Guaranteed Success

100% Money Back Guarantee

365 Days Free Update

Instant Download After Purchase

24x7 Customer Support

Average 99.9% Success Rate

More than 800,000 Satisfied Customers Worldwide

Multi-Platform capabilities - [Windows](#), [Mac](#), [Android](#), [iPhone](#), [iPod](#), [iPad](#), [Kindle](#)

Need Help

Please provide as much detail as possible so we can best assist you.

To update a previously submitted ticket:



 <p>One Year Free Update Free update is available within One Year after your purchase. After One Year, you will get 50% discounts for updating. And we are proud to boast a 24/7 efficient Customer Support system via Email.</p>	 <p>Money Back Guarantee To ensure that you are spending on quality products, we provide 100% money back guarantee for 30 days from the date of purchase.</p>	 <p>Security & Privacy We respect customer privacy. We use McAfee's security service to provide you with utmost security for your personal information & peace of mind.</p>
---	---	--

Any charges made through this site will appear as Global Simulators Limited.

All trademarks are the property of their respective owners.